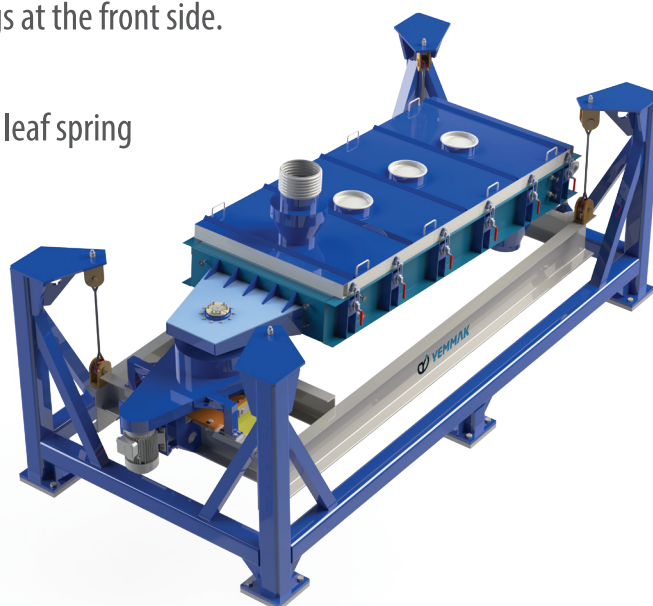


# GYRATORY SIEVE

## FEATURES

- The sieve is named after its main body dimensions (3500x1500 mm).
- The sieve frames are made of wood, and the main cover is made of aluminum.
- Oscillation elements are used instead of sliding bearings at the front side.
- Driven by a 4 kW - 1000 rpm motor.
- Eccentric rotor includes counterweights and composite leaf spring damping mechanisms.



RUMINANT



POULTRY



FISH



PET



CHEMICAL



MINING

 **YEMMAK**

## GYRATORY SIEVE

The Gyratory Sieve is a newly developed screening machine designed to offer an innovative solution for efficiently screening more challenging materials in industrial sieving systems. Sieving systems used in industries such as Feed, Chemical, Mining, Food, and Biomass play a critical role in classifying and separating processed materials. In particular, particle size distribution is a key parameter in feed production and must be controllable by manufacturers.



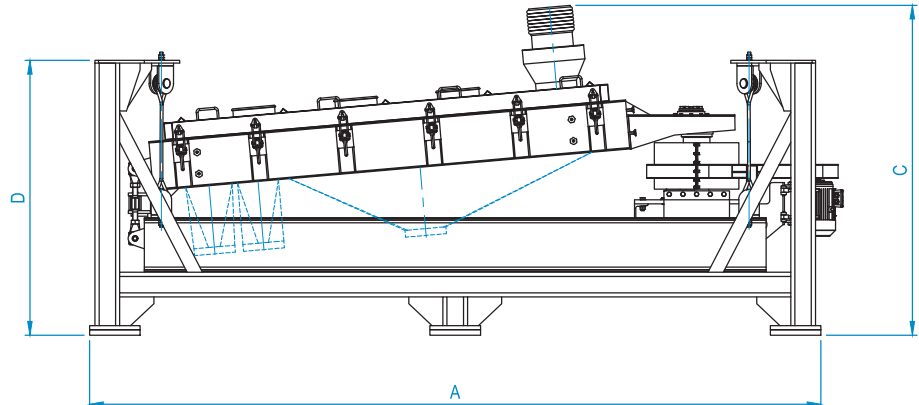
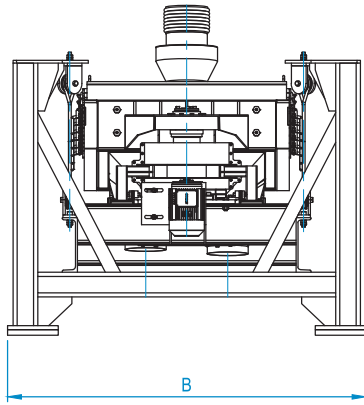
The product begins with circular motion at the feeding point, transitions into elliptical motion as it progresses through the machine, and transforms into linear motion at the discharge end. Since there is no vertical motion component, the material remains in continuous contact with the sieve surface, ensuring an efficient screening process.

### CONTINUOUS EFFICIENCY, HIGH PERFORMANCE

- Combination of circular, elliptical, and linear movements
- Aluminum body cover and wooden sieve frames
- Anti-clogging contact balls
- Dynamic absorption system

### USAGE AREAS:

- Poultry feed production
- Ruminant feed production
- Pet food production
- Fish feed production
- Chemical industry
- Mining industry



Number of Decks	Sieving Area (m <sup>2</sup> )	Motor (kW)	A (mm)	B (mm)	C (mm)	D (mm)	Weight (kg)
2	6,25	4	5350	2620	2400	2100	5450

Ömerli Mah. Ömerli Sok. No:21 Bandırma / Balıkesir  
P: +90 266 733 83 63 (3 Hat) • F: +90 266 733 83 66

[f](#) [ig](#) [yt](#) [in](#) | [yemmak.com](http://yemmak.com)

